

PRODUCT INFORMATION

REGUPOL EVERROLL ULTIMATE



Product:

resilient floor covering made of PUR-bonded EPDM-granulates, with 100 % EPDM colour content

Areas of Application:

Fitness Sports & Leisure, Commercial, Retail and Education flooring

Features:

comfortable, robust, durable, sustainable, slip resistant

Standard Roll Dimensions:

Width: 1,250 mm

Standard: 4 mm (40lm), 8 mm (25lm)

Presealed: 4 mm (20lm), 8 mm (25lm)

Standard Dimensions Modular Tiles:

Tile: 600 x 600mm

Plank: 1200 x 300mm

Hexagon: 600 x 520mm

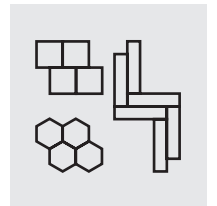
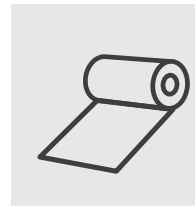
Thicknesses: 4mm and 8mm

Weight:

approx. 1.38 kg/m²/mm

Impact Resistance:

> 21 Nm based on EN 14904 / EN 1517



Force Reduction:

up to 14 % based on EN 14904 / EN 14808

Slip resistance:

AS 4586:2013 Slip resistance classification of new pedestrian surface materials, Appendix A – Wet Pendulum Test. Slip Certificate available on request.

Standard: P3, Sealed: P2, Slip Resistant Sealed: P5

Colours:

22 standard colours

Further technical data is available on request.



PRODUCT INFORMATION
REGUPOL EVERROLL ULTIMATE



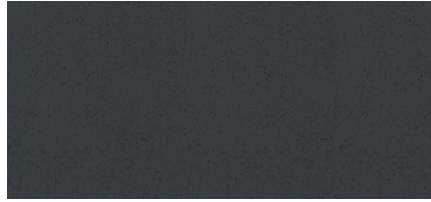
REGUPOL everroll ultimate Available standard or pre-sealed



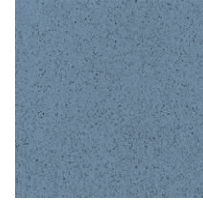
Manila [1105]
4 | 8mm (shape berlin)



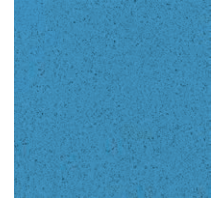
Osaka [1187]
4mm (shape oslo)



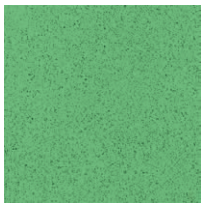
Lima [1113]
4mm (shape mons)



Boston [1112]
4mm (shape nome)



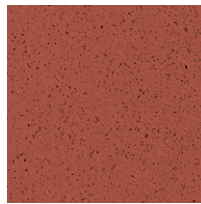
Seattle [1010]
4mm (shape palau)



Galway [1009]
4mm (shape manaus)



Yuma [1030]
4mm (shape kush)



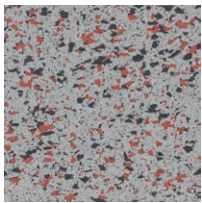
Lagos [1008]
4mm (shape goa)



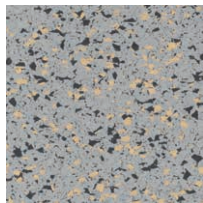
Melbourne [1074]
4mm (shape melbourne)



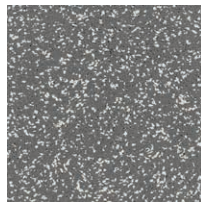
Amsterdam [1036]
4mm (shape amsterdam)



Jakarta [3003]
4mm (intensity jakarta)



Kýpros [3002]
4mm (intensity kypros)



Oslo [1208]
4mm (active oslo)



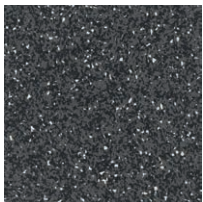
Paris [1085]
4 | 8mm (intensity berlin)



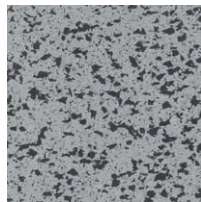
Berlin [2005]
4mm (active berlin)



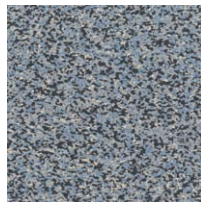
Mons [3138]
4 | 8mm (intensity mons)



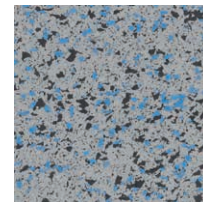
Pompeji [1194]
4mm (active mons)



Island [3000]
4 | 8mm (intensity island)



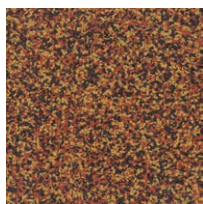
Nome [2004]
4mm (active nome)



Helsinki [3001]
4mm (intensity nome)



Kush [2001]
4mm (active kush)



Goa [2000]
4mm (active goa)

(brackets show superceeded product name)

Deviations from the colours shown are possible due to production batches and brochure print.

We reserve the right to make changes to the technical data. The test results and specified values are subject to a tolerance of +/- 10 %. Crucial for the up-to-date data is the information on our homepage www.regupol.com.