

THE FLOORING SOLUTION FOR YOUR  
**FITNESS FACILITIES**  
TRAMPOLINE PARKS





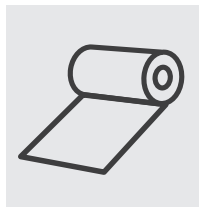
## OUR FLOOR FOR **TRAMPOLINE PARKS**

### Cushioning:

**Trampoline parks are currently a huge trend because they can combine movement with fun and enjoyment.**

The unique surface on our **REGUPOL** everroll fitness floors makes them slip-resistant. This ensures that the athletes in their jumping socks have a secure footing, especially on the walkways between the different trampolines.

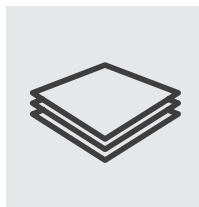
With the everroll floor structure, **REGUPOL** provides additional preventive properties for trampoline parks, which help to counter the risk of injury in the event of falls. On top of this, they have a noticeably elastic feel, which makes the time spent in the active jumping areas an exceptional experience.



#### **Rolls**

Slip-resistant | robust and resilient | large colour choice | standard | in a thickness of 4 mm

**Our products: REGUPOL everroll classic, REGUPOL everroll vitality, REGUPOL everroll ultimate**



#### **Floor build-up**

Pleasant and comfortable to walk on | fall protection | good acoustic properties | range of colours | various thicknesses

**Our products: REGUPOL everroll impact**

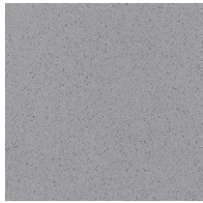


AVAILABLE

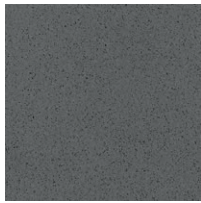
# COLOURS

## FOR TRAMPOLINE PARKS

### REGUPOL everroll ultimate Available in standard



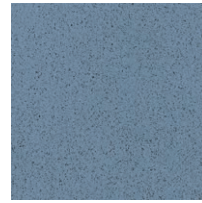
Manila [1105]  
4mm (shape berlin)



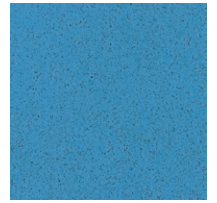
Osaka [1187]  
4mm (shape oslo)



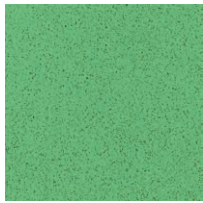
Lima [1113]  
4mm (shape mons)



Boston [1112]  
4mm (shape nome)



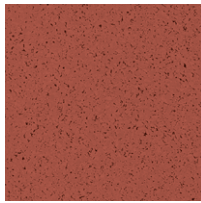
Seattle [1010]  
4mm (shape palau)



Galway [1009]  
4mm (shape manaus)



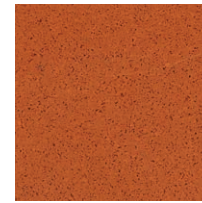
Yuma [1030]  
4mm (shape kush)



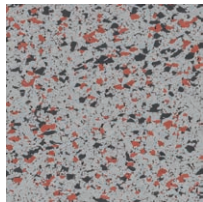
Lagos [1008]  
4mm (shape goa)



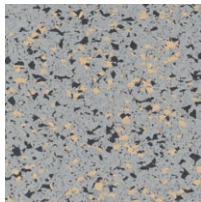
Melbourne [1074]  
4mm (shape melbourne)



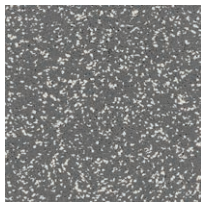
Amsterdam [1036]  
4mm (shape amsterdam)



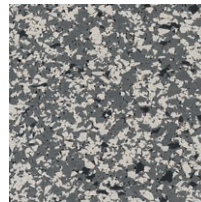
Jakarta [3003]  
4mm (intensity jakarta)



Kýpros [3002]  
4mm (intensity kypros)



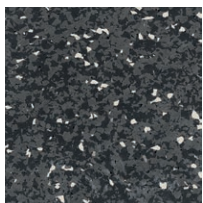
Oslo [1208]  
4mm (active oslo)



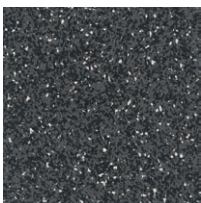
Paris [1085]  
4mm (intensity berlin)



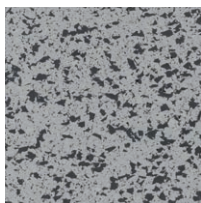
Berlin [2005]  
4mm (active berlin)



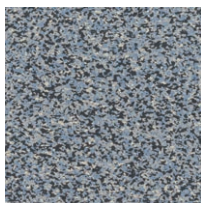
Mons [3138]  
4mm (intensity mons)



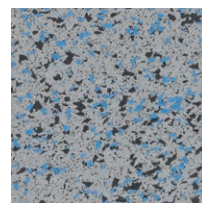
Pompeji [1194]  
4mm (active mons)



Island [3000]  
4mm (intensity island)



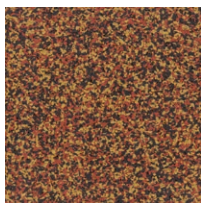
Nome [2004]  
4mm (active nome)



Helsinki [3001]  
4mm (intensity nome)



Kush [2001]  
4mm (active kush)



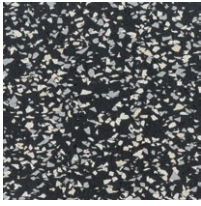
Goa [2000]  
4mm (active goa)

(brackets show superceeded product name)

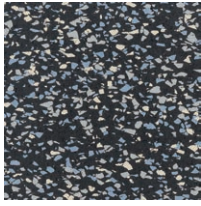


Deviations from the colours shown are possible due to production batches and brochure print.

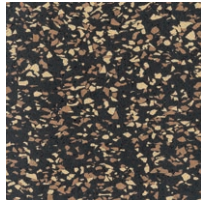
## REGUPOL everroll vitality Available in standard edition 4.0



Berlin [3116]  
4mm (vitality berlin)

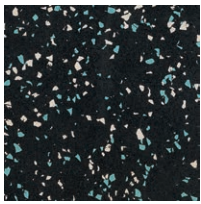


Nome [3115]  
4mm (vitality nome)

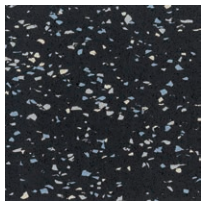


Kush [3112]  
4mm (vitality kush)

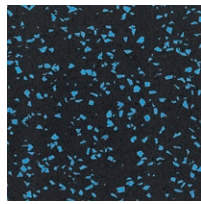
## REGUPOL everroll classic Available in standard edition 4.0



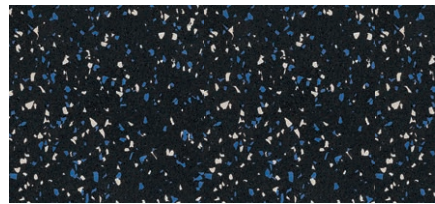
Auckland [3241]  
4mm (tone auckland)



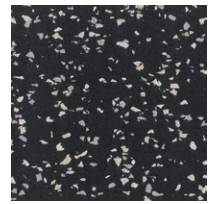
Nome [3121]  
4mm (tone nome)



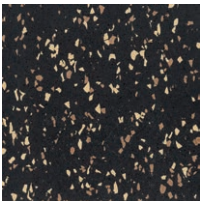
Palau [3031]  
4mm (core palau)



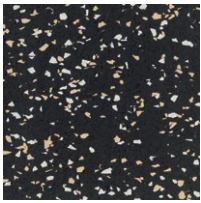
Sydney [3240]  
4mm (tone sydney)



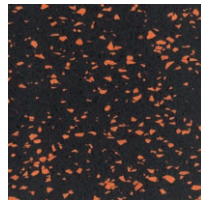
Bern [3122]  
4mm (tone berlin)



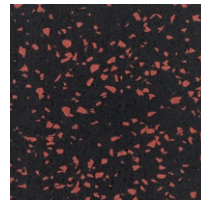
Kush [3118]  
4mm (tone kush)



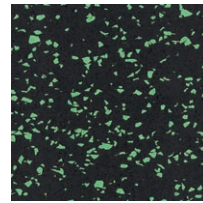
Lhasa [3180]  
4mm (tone lhasa)



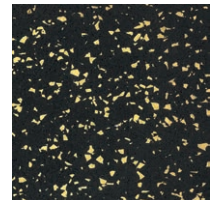
Amsterdam [3145]  
4mm (core amsterdam)



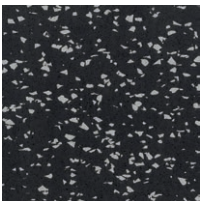
Goa [3033]  
4mm (core goa)



Manaus [3032]  
4mm (core manaus)



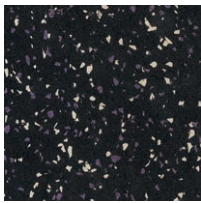
Melbourne [3029]  
4mm (core melbourne)



Berlin [3030]  
4mm (core berlin)



Mons [3256]  
4mm (core mons)



Perth [3239]  
4mm (tone perth)

edition 4.0 = brilliant colours and nonreflecting surface  
(brackets show superceeded product name)

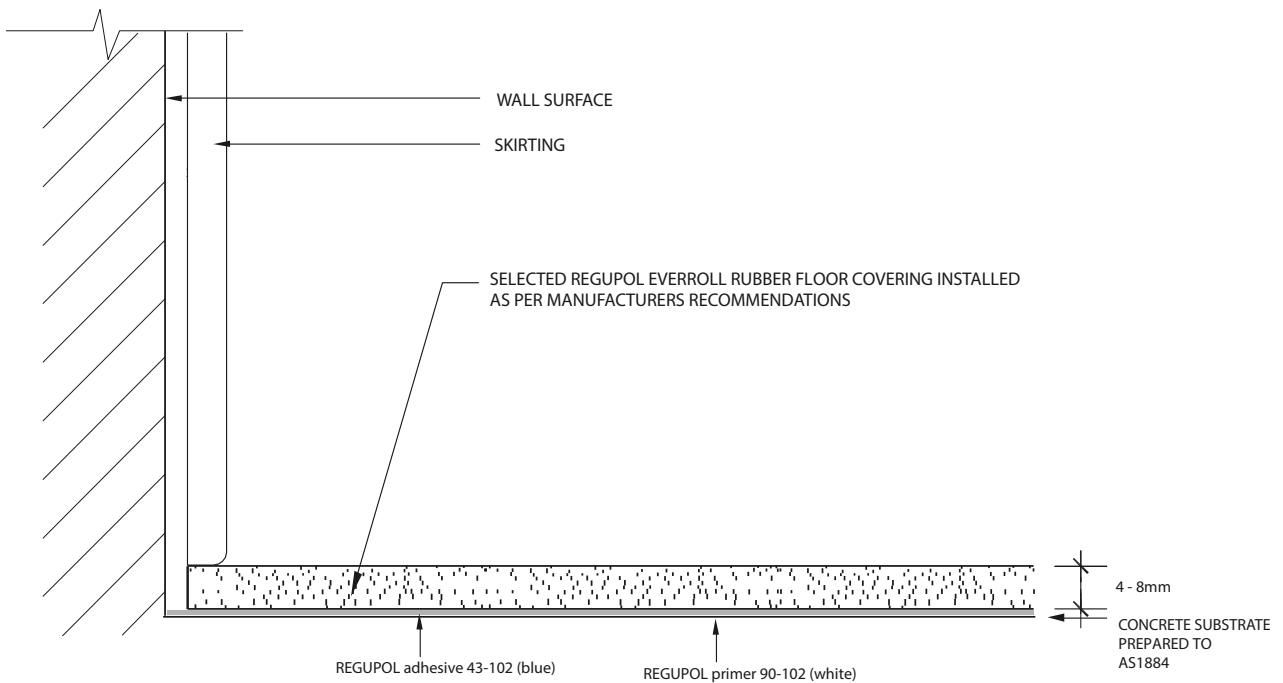
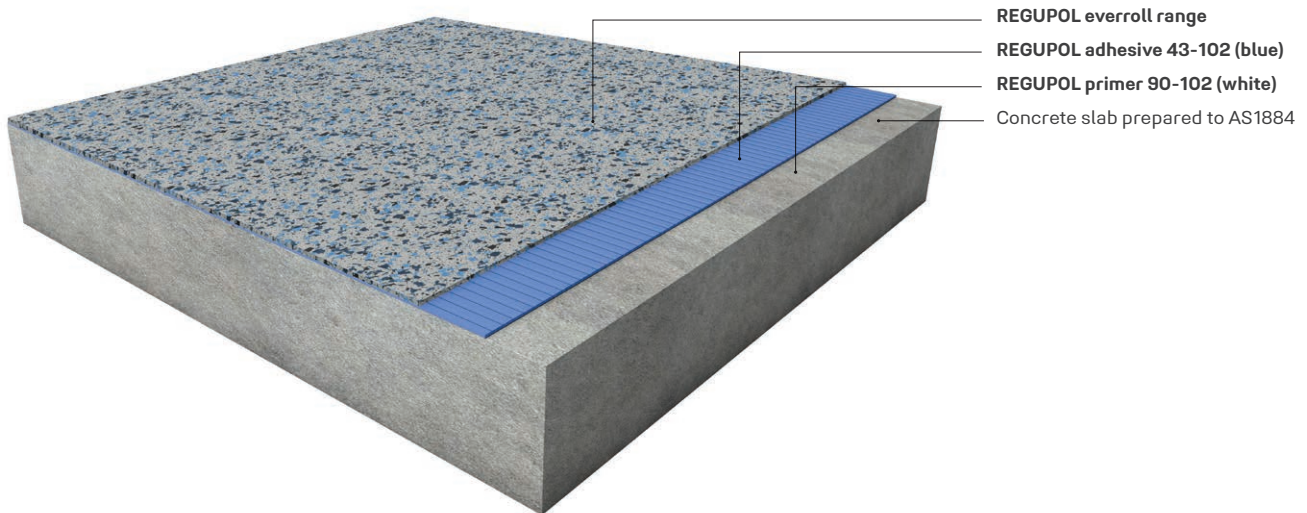


Deviations from the colours shown are possible due to production batches and brochure print.



# TRAMPOLINE PARK AREAS

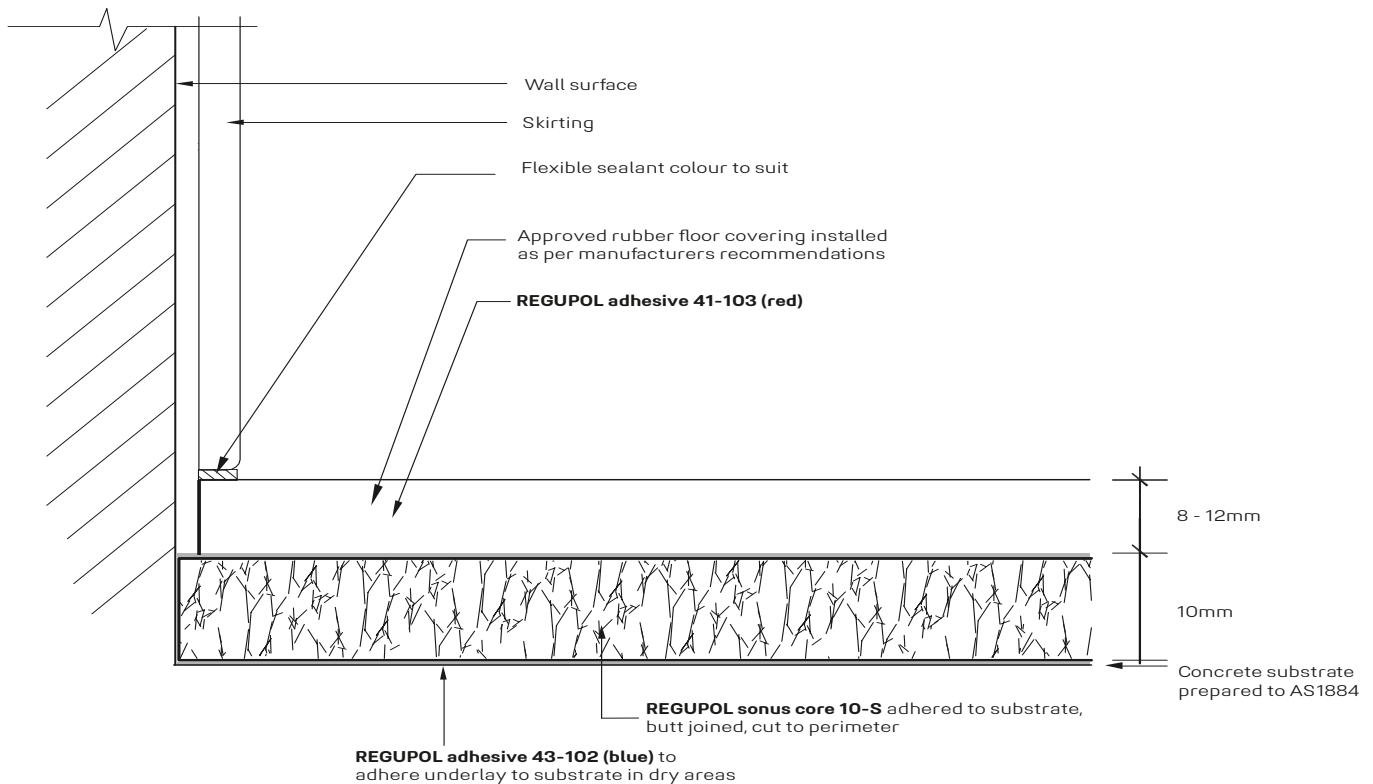
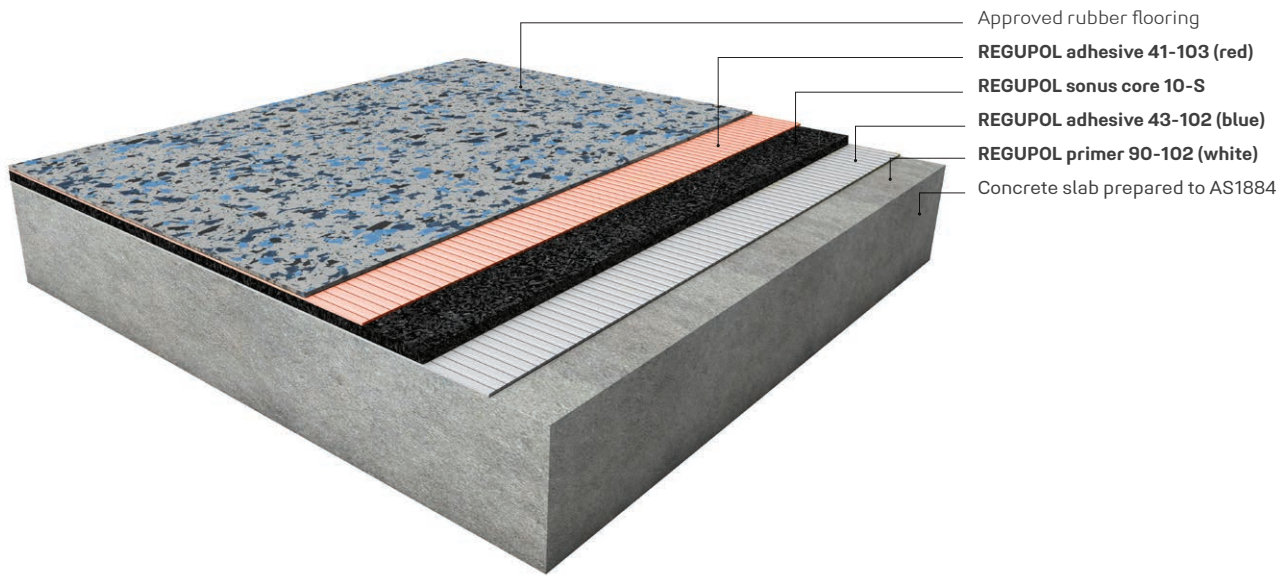
This system reflects a typical application with **REGUPOL everroll** floor coverings. For all other applications please contact the **REGUPOL** sports division. Please note that drawings are not to scale and are for illustration purposes only.



**DISCLAIMER:** The above information is given in good faith as a suggested guide in specifying REGUPOL everroll rubber flooring, no guarantee or warranty is expressed or implied. Any circumstances not covered by this guide should be referred to REGUPOL Australia or its Distributors for any particular attention required. There are, however, many factors that may affect the outcome of projects using our products that are beyond our control. REGUPOL Australia Pty. Ltd. cannot be responsible for poor climate conditions, inadequate surface preparation, poor application techniques, not observing curing times, improper thinning of adhesives or any variable beyond our control. No liability is accepted by REGUPOL Australia Pty. Ltd., our employees, distributors, representatives or agents, for any loss or damage, direct or indirect, that may result from using the information and/or suggestions as actual conditions for use that are beyond our control. All materials should be checked/tested for their suitability to the prevailing site conditions.

# TRAMPOLINE PARK AREAS

This system reflects a typical application with **REGUPOL everroll impact** floor coverings. For all other applications please contact the **REGUPOL** sports division. Please note that drawings are not to scale and are for illustration purposes only.



**DISCLAIMER:** The above information is given in good faith as a suggested guide in specifying REGUPOL everroll rubber flooring, no guarantee or warranty is expressed or implied. Any circumstances not covered by this guide should be referred to REGUPOL Australia or its Distributors for any particular attention required. There are, however, many factors that may affect the outcome of projects using our products that are beyond our control. REGUPOL Australia Pty. Ltd. cannot be responsible for poor climate conditions, inadequate surface preparation, poor application techniques, not observing curing times, improper thinning of adhesives or any variable beyond our control. No liability is accepted by REGUPOL Australia Pty. Ltd., our employees, distributors, representatives or agents, for any loss or damage, direct or indirect, that may result from using the information and/or suggestions as actual conditions for use that are beyond our control. All materials should be checked/tested for their suitability to the prevailing site conditions.



**REGUPOL Australia Pty. Ltd.**

155 Smeaton Grange Road  
Smeaton Grange NSW 2567  
phone +61 2 4624 0050  
rubbersales@regupol.com.au

**REGUPOL Germany GmbH & Co. KG**

**REGUPOL America LLC**

**REGUPOL Acoustics Middle East FZE**

**REGUPOL Schweiz AG**

**REGUPOL Zebra Athletics LLC**

**BSW Shanghai CO. LTD.**

[www.regupol.com.au](http://www.regupol.com.au)