

A close-up photograph of a person's legs on a stationary bike in a gym. The person is wearing light blue sneakers with blue laces and blue and grey cycling shoes. The bike is grey and blue. The floor is a dark grey, speckled rubber mat. The background shows other gym equipment and a bright light source.

THE FLOORING SOLUTION FOR YOUR
FITNESS FACILITIES
CARDIO & STRENGTH TRAINING

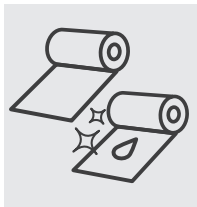


OUR FLOOR FOR CARDIO & STRENGTH TRAINING

Robust and cushioning:

REGUPOL everroll fitness floors can withstand high point loads exerted by machines and are highly durable and robust under cardio and stationary strength equipment. That makes our floor a long-lasting solution for your fitness studio.

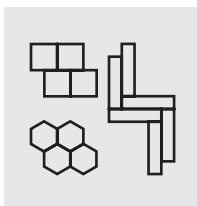
When your customers get into the swing of things, so does your equipment. The resulting vibrations are effectively reduced by our flooring.



Rolls

Resilient | firm enough to absorb static point loads to a certain degree | standard or pre-sealed | standard thicknesses: 4 or 8 mm

Our products: REGUPOL everroll classic, REGUPOL everroll vitality, REGUPOL everroll ultimate



Modular tiles

Available as pre-cut modular tiles. Create your own creative space, by using different coloured squares, hexagons or planks.

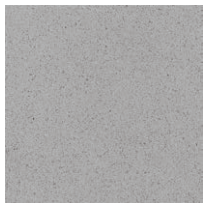
Our products: REGUPOL everroll range

AVAILABLE

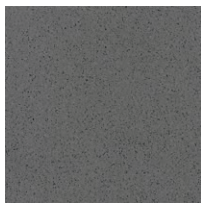
COLOURS

FOR CARDIO TRAINING

REGUPOL everroll ultimate Available in standard or pre-sealed.



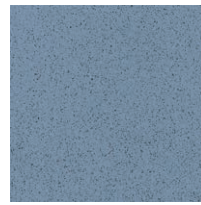
Manila [1105]
4 | 8mm (shape berlin)



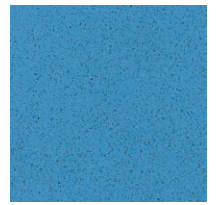
Osaka [1187]
4mm (shape oslo)



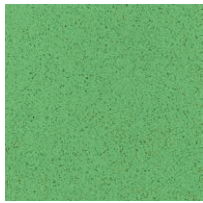
Lima [1113]
4mm (shape mons)



Boston [1112]
4mm (shape nome)



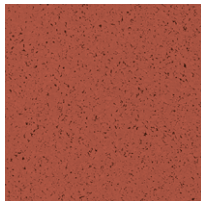
Seattle [1010]
4mm (shape palau)



Galway [1009]
4mm (shape manaus)



Yuma [1030]
4mm (shape kush)



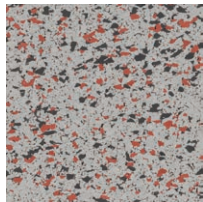
Lagos [1008]
4mm (shape goa)



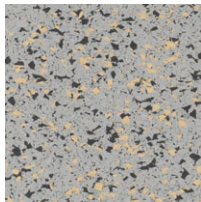
Melbourne [1074]
4mm (shape melbourne)



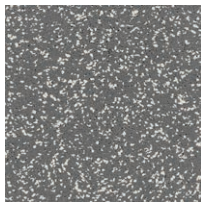
Amsterdam [1036]
4mm (shape amsterdam)



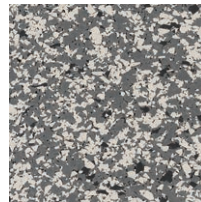
Jakarta [3003]
4mm (intensity jakarta)



Kýpros [3002]
4mm (intensity kypros)



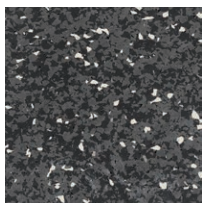
Oslo [1208]
4mm (active oslo)



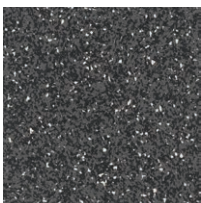
Paris [1085]
4 | 8mm (intensity berlin)



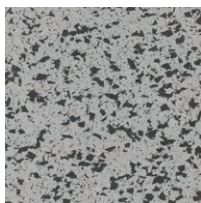
Berlin [2005]
4mm (active berlin)



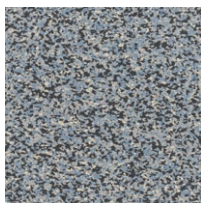
Mons [3138]
4 | 8mm (intensity mons)



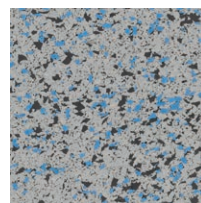
Pompeji [1194]
4mm (active mons)



Island [3000]
4 | 8mm (intensity island)



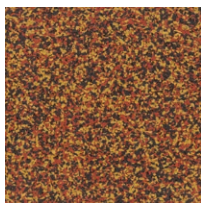
Nome [2004]
4mm (active nome)



Helsinki [3001]
4mm (intensity nome)



Kush [2001]
4mm (active kush)



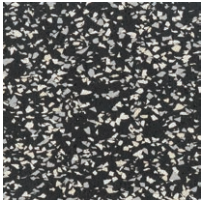
Goa [2000]
4mm (active goa)

(brackets show superceeded product name)

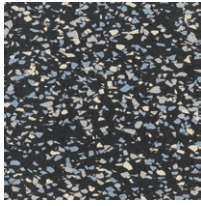


Deviations from the colours shown are possible due to production batches and brochure print.

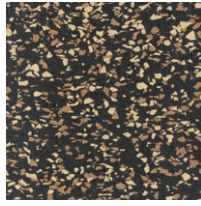
REGUPOL everroll vitality Available in standard **edition 4.0** or pre-sealed.



Berlin [3116]
4mm (vitality berlin)

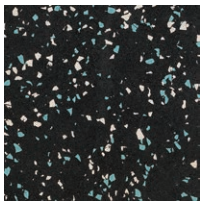


Nome [3115]
4mm (vitality nome)

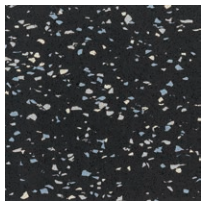


Kush [3112]
4mm (vitality kush)

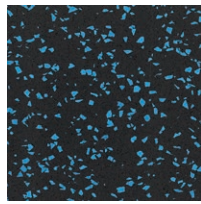
REGUPOL everroll classic Available in standard **edition 4.0** or pre-sealed.



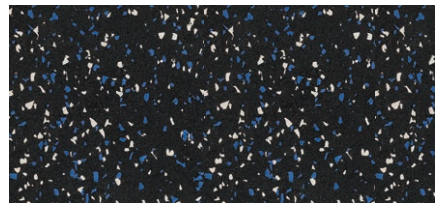
Auckland [3241]
4 | 8mm (tone auckland)



Nome [3121]
4 | 8mm (tone nome)



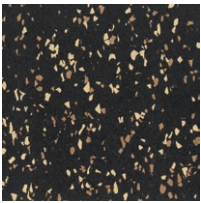
Palau [3031]
4 | 8mm (core palau)



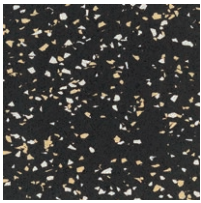
Sydney [3240]
4 | 8mm (tone sydney)



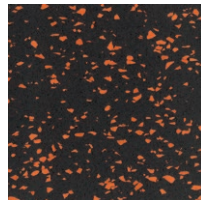
Bern [3122]
4 | 8mm (tone berlin)



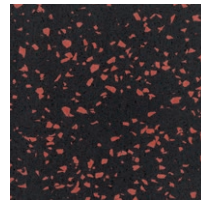
Kush [3118]
4 | 8mm (tone kush)



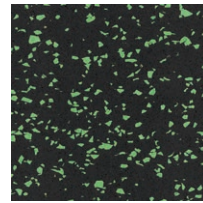
Lhasa [3180]
4 | 8mm (tone lhasa)



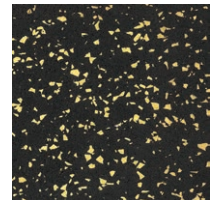
Amsterdam [3145]
4 | 8mm (core amsterdam)



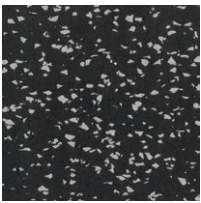
Goa [3033]
4 | 8mm (core goa)



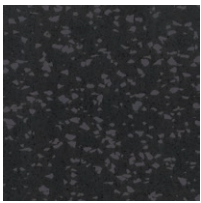
Manaus [3032]
4 | 8mm (core manaus)



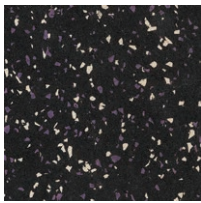
Melbourne [3029]
4 | 8mm (core melbourne)



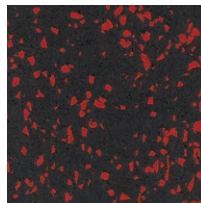
Berlin [3030]
4 | 8mm (core berlin)



Mons [3256]
4 | 8mm (core mons)



Perth [3239]
4 | 8mm (tone perth)



Marrakech [3276]
8mm (core marrakech)

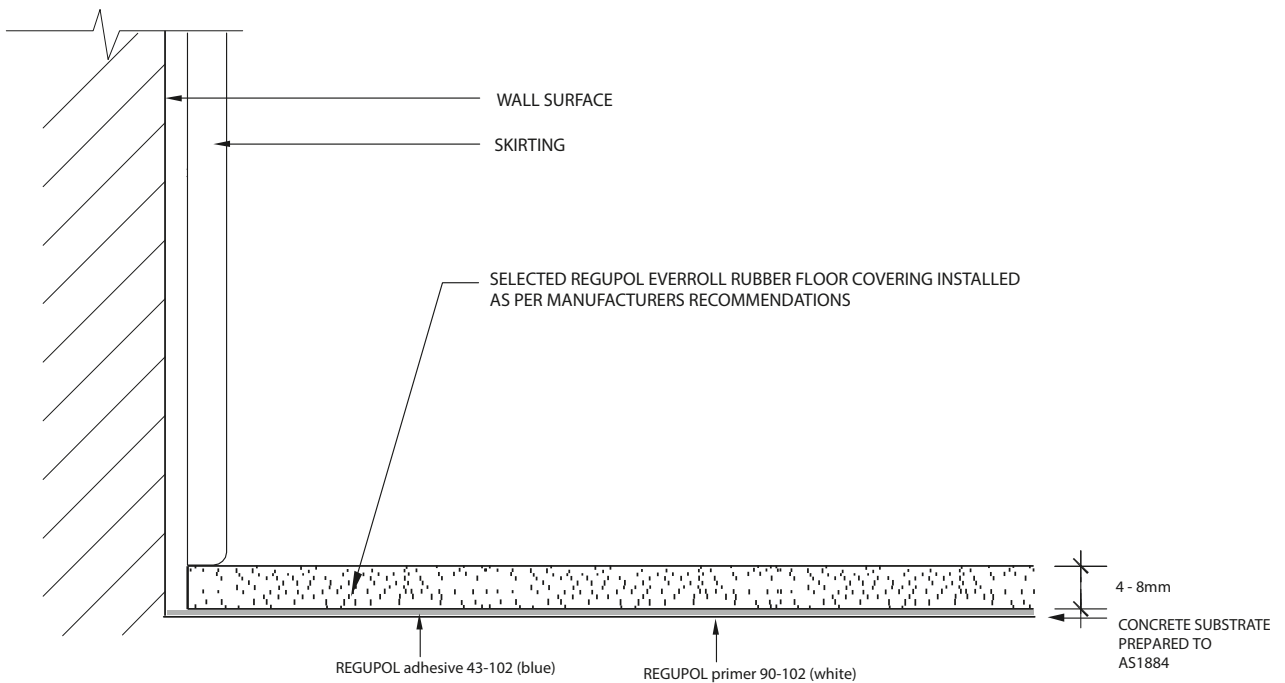
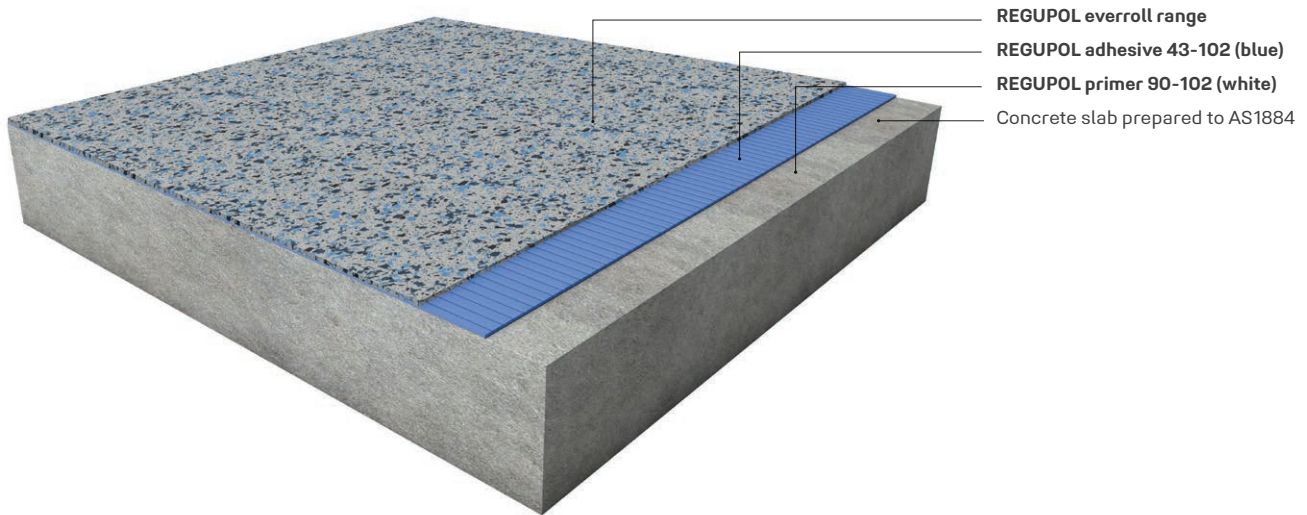
edition 4.0 = brilliant colours and nonreflecting surface
(brackets show superseded product name)



Deviations from the colours shown are possible due to production batches and brochure print.

CARDIO & STRENGTH AREAS

This system reflects a typical application with **REGUPOL everroll** floor coverings. For all other applications please contact the **REGUPOL** sports division. Please note that drawings are not to scale and are for illustration purposes only.



DISCLAIMER: The above information is given in good faith as a suggested guide in specifying REGUPOL everroll rubber flooring, no guarantee or warranty is expressed or implied. Any circumstances not covered by this guide should be referred to REGUPOL Australia or its Distributors for any particular attention required. There are, however, many factors that may affect the outcome of projects using our products that are beyond our control. REGUPOL Australia Pty. Ltd. cannot be responsible for poor climate conditions, inadequate surface preparation, poor application techniques, not observing curing times, improper thinning of adhesives or any variable beyond our control. No liability is accepted by REGUPOL Australia Pty. Ltd., our employees, distributors, representatives or agents, for any loss or damage, direct or indirect, that may result from using the information and/or suggestions as actual conditions for use that are beyond our control. All materials should be checked/tested for their suitability to the prevailing site conditions.



REGUPOL Australia Pty. Ltd.
155 Smeaton Grange Road
Smeaton Grange NSW 2567
phone +61 2 4624 0050
rubbersales@regupol.com.au

REGUPOL Germany GmbH & Co. KG
REGUPOL America LLC
REGUPOL Acoustics Middle East FZE
REGUPOL Schweiz AG
REGUPOL Zebra Athletics LLC
BSW Shanghai CO. LTD.

www.regupol.com.au